

# 2025 IMPACT REPORT



40 YEARS OF  
STRENGTHENING FAMILIES

# TABLE OF CONTENTS

- 01 Letter from the CEO
- 02 Our Programs
- 04 Your Dollars at Work
- 06 Impact Story: Meet Phoenix
- 08 Policy Milestones & Events
- 09 Our Finances



## LETTER FROM THE CEO

In 2025, Seneca celebrated our 40th year serving children and families. It's an incredible feat, fueled by relentless optimism, continuous innovation, deep passion for this work — and the understanding that better outcomes are possible, when we stay persistent. This is the true spirit of Seneca. I am so proud of how the team rapidly adapted in the face of funding and policy challenges to drive continued excellence and growth this year.

When asked to build out the continuum of foster care placements for Sacramento County, we developed a vision that amplified and supported their existing provider network, all while addressing significant system gaps. (These new programs are expected to officially launch in the next year!) When the outcomes for Kaiser and other commercial insurance clients showed significant improvements in child well-being and hospital diversion, we were invited to expand those services to new regions across Northern and Southern California. And when we identified crucial gaps in the implementation of universal, school-based behavioral health services, we developed a comprehensive training curriculum in our Unconditional Education model for educators and administrators.

Whatever the next 40 years may bring, I know that Seneca will continue to innovate and evolve, fueled by our passionate team of experts. Thank you for your continued trust and support, and for sharing the foundational belief that every child and family deserves the gift of Unconditional Care. In a world full of uncertainty, that commitment is one thing that will never change.



Warmly,

Leticia Galyean, LCSW  
CEO & President



## BEHAVIORAL HEALTH

- **Outpatient Services:** Mental healthcare that youth can access in clinics, schools, online, and in the community
- **Enhanced Care Management:** Coordination of care for youth across different providers and services
- **Wraparound:** Comprehensive support to build family stability and resilience
- **Crisis Stabilization & Residential Programs:** Treatment in safe settings for youth experiencing urgent mental health crises
- **Partial Hospitalization:** Daily (Mon.-Fri.), on-site therapy programs that youth participate in while still living at home
- **Mobile Response:** Crisis support for youth and families as an alternative to involving law enforcement
- **Juvenile Justice Services:** Early interventions to help youth avoid further involvement in the courts
- **Commercial Sexual Exploitation of Children Services:** Trauma-informed support to help youth and their families heal
- **Intensive Community-Based Services:** Specialized resources beyond individual therapy, offered wherever and whenever families need them most



# OUR PROGRAMS



## PERMANENCY & PLACEMENT

- **Emergency Short-Term Care:** Safe, welcoming, home-like care for youth in need of urgent short-term placement
- **Foster Care:** Matching foster youth with complex needs with stable, nurturing homes where they can thrive
- **Complex Care:** Residential therapeutic programs for youth in need of intensive treatment
- **Visitation:** Safe environments for children and families to spend time together while working toward reunification
- **Prevention services:** Supporting and strengthening families with the tools they need to keep children safe at home
- **National Institute for Permanent Family Connectedness (NIPFC):** Seneca's family-finding initiative that connects youth in the child welfare system with relatives and other supports



## TRAINING

- The Seneca Institute for Advanced Practice (SIAP) provides family-centered training to staff, public agencies, and community organizations that support youth with complex mental health needs.



## EDUCATION

- **Unconditional Education (UE) Partnerships:** Whole school partnerships that transform schools into communities where all students can thrive
- **Nonpublic Schools:** Small, specialized schools that provide students with therapeutic and academic services



## TODOPOR MI FAMILIA (TPMF)

- A national program that provides case management and access to mental health services for families separated at the U.S.-Mexico border.



# YOUR DOLLARS AT WORK

25,000+

children and families impacted across California & Washington

*“I’m learning, and I’m proud of advocating for myself.”* -NPS student

*“There is no greater reward or motivator than to see a youth who has struggled doing well.”*

-Seneca foster parent

## NEW THIS YEAR

### BAY AREA

Grew our Kaiser Wraparound program into eight regions, and integrated Rapid Response services to stabilize crisis situations and keep kids safe at home.

Trained and certified Seneca staff on Dialectical Behavioral Therapy (DBT), thanks to a grant from California’s Children and Youth Behavioral Health Initiative. DBT is an evidence-based form of talk therapy that treats emotional dysregulation and other mental health concerns.

### CENTRAL COAST

Expanded youth crisis services in Monterey County, including breaking ground on a new facility, growing the Mobile Crisis Response Team and obtaining licenses for crisis Short-Term Residential Therapeutic Programs (STRTPs) services.

Opened a new outpatient behavioral health clinic in San Benito County, providing Medi-Cal specialty mental health services.

### SOUTHERN CALIFORNIA

Launched Wraparound services in Riverside County, already serving 113 youth and families.

Partnered with the Fullerton Joint Union High School District to embed two full-time therapists on site, creating social and emotional learning curriculum and meeting with students weekly to support their mental health.

### WASHINGTON

Established our fully operational Mobile Response & Stabilization Services Team in Pierce County.

Partnered with the City of Seattle to provide telehealth services to local middle school and high school students (featured in *The Seattle Times*!)

200+

local programs

2,130+

youth provided critical crisis support

1,732

average monthly enrollment in Outpatient Services

1,200+

kids enrolled in Wraparound

**75** UE partnership schools, reaching **7,386** students

**183** students served at Seneca’s **4** nonpublic schools (NPS)

**18,000+** family finding searches for **75** different agencies

1,555

families separated at the border connected to vital resources and services

722+

families supported as they navigated the child welfare system

**925** professional trainings held for **13,602** attendees

*“(My son) has improved his communication skills with me, students, and teachers. He is able to tell us his feelings and calm himself down...it is a complete 180.”*

-Seneca parent



# PHOENIX'S STORY

## A Journey Toward Healing & Hope



For some families, there comes a moment where it feels impossible to do it all alone. In the Barnes household, that moment arrived earlier than expected for their son Phoenix.

As his emotions became larger and harder to manage, the family found themselves reaching the limits of what they could handle.

“He needs help, we need help,” his mom, Alisa, recalls saying, a realization that changed everything.

Phoenix joined the Barnes family back in 2014, as Alisa and her husband Derek’s first ever foster placement. After spending the beginning weeks of his life in the NICU, Phoenix struggled with attachment and only associated being held with feeding. Alisa remembers constantly wearing him in a wrap, helping him slowly learn what it meant to be held out of comfort rather than necessity.

While this worked at a young age, as Phoenix grew, so did the challenges he faced. His emotions sometimes escalated quickly, and the family was referred to one of Seneca’s outpatient clinics for support. Our outpatient programs are designed to support youth impacted by trauma, anxiety, depression, and other complex challenges. We meet families wherever they are: in the clinic, in schools, in the community, online, or—like in Phoenix’s case—right at home.



Scan the QR code to watch Phoenix’s story!

For the Barnes family, the Seneca team coming to their home and seeing Phoenix in his everyday environment made all the difference. Our clinicians developed play-based strategies to help him express emotions that were too big or complex to articulate verbally. Using games like Candy Land, Uno, and Jenga, we helped him build emotional literacy—naming feelings, practicing coping skills, and exploring how his body responds to stress. This play therapy created a safe, low-pressure environment for Phoenix to practice emotional regulation and connection, and it unlocked progress that traditional talk therapy alone couldn’t achieve.

Over time, the Barnes family began to see meaningful changes. Today, Phoenix is thriving in ways that once felt far out of reach. He’s gotten more confident in expressing his needs, more secure in his relationships, and more able to navigate difficult moments.

“When you see a child make the connection that they’re safe...you know we’re doing something good here,” Derek explains.

Phoenix is a reminder of just how powerful it can be when families ask for help—and when they are met where they are with truly Unconditional Care.



## POLICY MILESTONES

- In partnership with the California Alliance of Child and Family Services, we successfully advocated to include \$31.5 million in the state budget to help Foster Family Agencies cover the increased cost of insurance premiums.
- Seneca hosted Assembly Member Ash Kalra and Santa Clara County partners at our San Jose site, where we shared the impact of our programs and our Youth Advisory Board.
- Met with legislative committee consultants at our Sonoma site, where we discussed our Wraparound programs and provided feedback on developing a High Fidelity Wraparound model.
- Connected with Oakland City Council Member Ken Houston to introduce him to Seneca, align on shared values, provide a tour of our Oakland headquarters, and advocate for support in serving his constituents in District 7.

## 2026 EVENTS

- **Concours d'Elegance Charity Drawing** | August 16: Carmel, CA
- **70th Annual Kinship Seneca Wine & Food Tasting** | August 29: Paicines, CA
- **Central Coast Gala, The Club at Pasadera** | October 17: Monterey, CA



## OUR VALUED PARTNERS

- Bank of America Charitable Foundation
- Bluebird Legacy, Inc.
- Braga Fresh
- California Giant, Inc.
- Coastal Roots Hospitality
- Community Foundation for Monterey County
- D'Arrigo California
- Del Monte Shopping Center
- Harden Foundation
- HUB International Insurance Services, Inc.
- Irene S. Scully Family Foundation
- J.W. and Sandra L. Mitchell Foundation Kinship Seneca
- Living Spaces
- Montage Health
- Monterey Peninsula Foundation
- Nancy Eccles and Homer M. Hayward Family Foundation
- Pebble Beach Company
- Pebble Beach Company Foundation
- Pebble Beach Concours d'Elegance
- Taylor Farms
- The Green Foundation
- Valliere Foundation

## OUR FINANCES

Current Assets	\$77,671,210
Property and Equipment	\$59,798,733
Other Assets	\$3,000,692
<b>Total Assets</b>	<b>\$140,470,635</b>

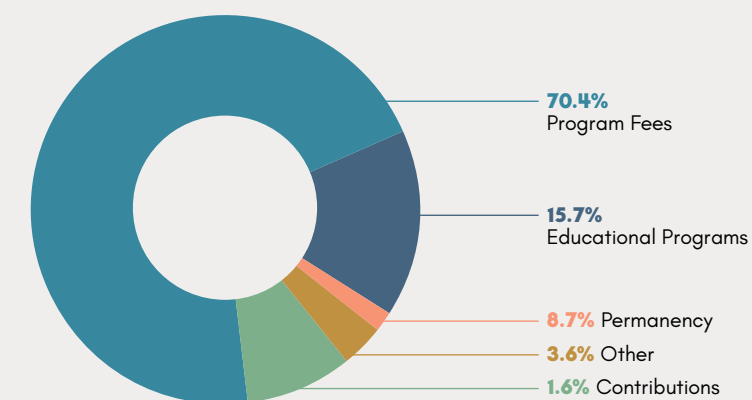
Current Liabilities	\$47,857,485
Long-Term Liabilities	\$40,143,163
<b>Total Liabilities</b>	<b>\$88,000,648</b>

### NET ASSETS

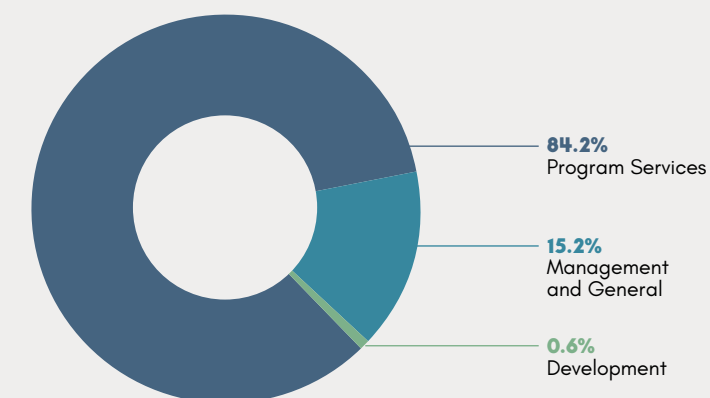
Without Restrictions	\$51,763,950
With Restrictions	\$706,037
<b>Total Net Assets</b>	<b>\$52,469,987</b>

**TOTAL LIABILITIES AND NET ASSETS \$140,470,635**

### Total Public Support + Revenue



### Total Expenses





## OUR MISSION:

Seneca provides Unconditional Care to children, families, and communities, doing whatever it takes to meet their needs during life's most challenging moments.

